

Initial C™: Single use clavicle sterile kits

Initial C™ - Clavicle kits contents

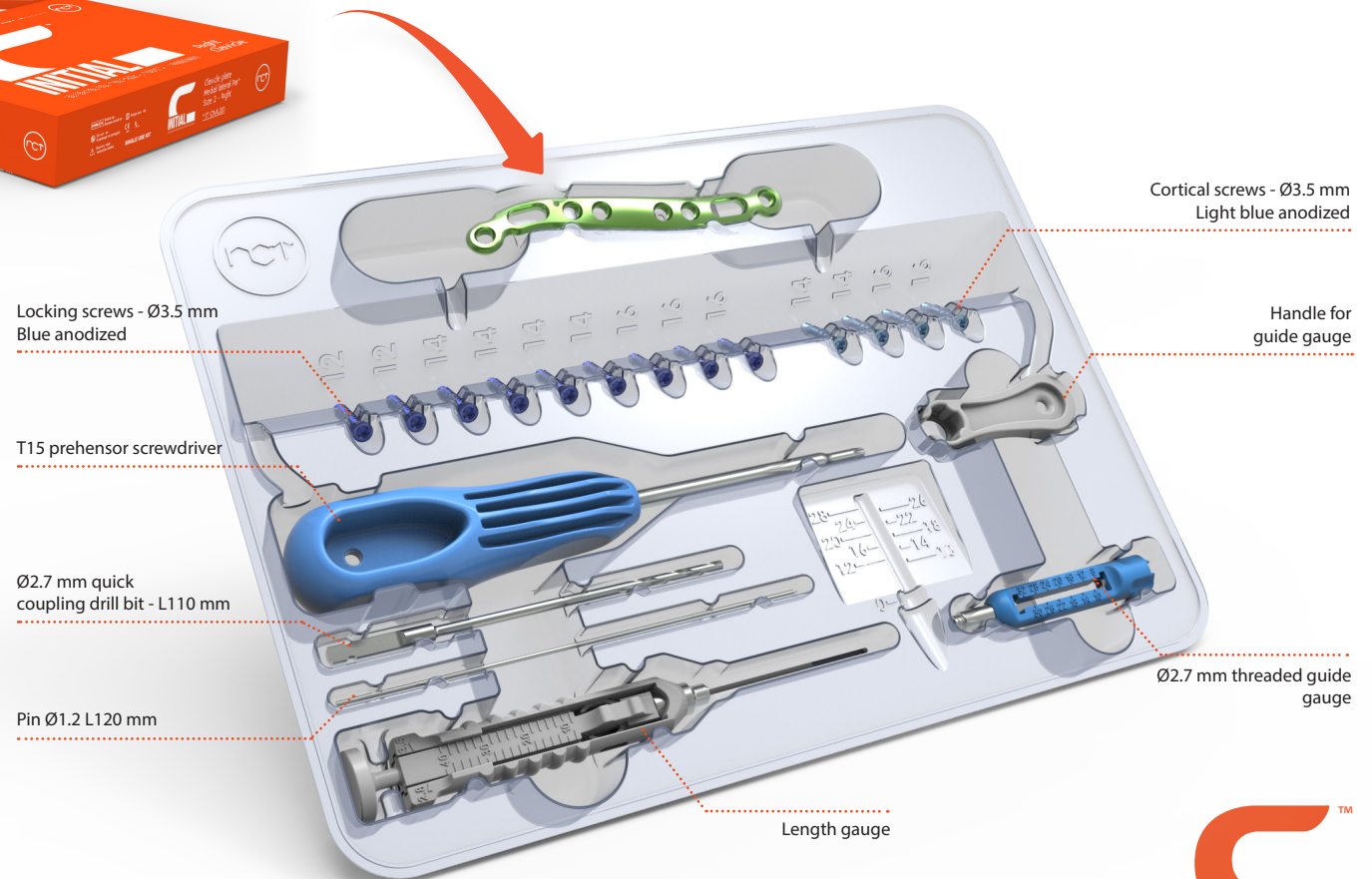


Indications :

The implants of the Initial C™ range are dedicated to the fixation of fractures, mal-union, non-unions, and osteotomies of the clavicle in adults.

Contraindications:

- Serious vascular deterioration, bone devitalization,
- Pregnancy.
- Acute or chronic local or systemic infections.
- Lack of musculo-cutaneous cover, severe vascular deficiency affecting the concerned area.
- Insufficient bone quality preventing a good fixation of the implants into the bone,
- Muscular deficit, neurological deficiency or behavioral disorders, which could submit the implant to abnormal mechanical strains.
- Allergy to one of the materials used or sensitivity to foreign bodies.
- Serious problems of non-compliance, mental or neurological disorders, failure to follow post-operative care recommendations.
- Unstable physical and/or mental condition.



NEWCLIP-TECHNICS



Initial C™: Single use clavicle sterile kits

Initial C™ - Clavicle kits contents

> Initial C™ kits references - Midshaft and lateral midshaft plates

MIDSHAFT AND MIDSHAFT- LATERAL PLATES		BENDABLE MIDSHAFT PLATES	
Ref.	Description	Ref.	Description
KIT-CM2D	Clavicle kit - Midshaft part - Size 2 - Right	KIT-CBM1D	Clavicle kit - Bendable - Midshaft part - Size 1 - Right
KIT-CM2G	Clavicle kit - Midshaft part - Size 2 - Left	KIT-CBM1G	Clavicle kit - Bendable - Midshaft part - Size 1 - Left
KIT-CML1D	Clavicle kit - Lateral midshaft part - Size 1 - Right	KIT-CBM2D	Clavicle kit - Bendable - Midshaft part - Size 2 - Right
KIT-CML1G	Clavicle kit - Lateral midshaft part - Size 1 - Left	KIT-CBM2G	Clavicle kit - Bendable - Midshaft part - Size 2 - Left
KIT-CML2D	Clavicle kit - Lateral midshaft part - Size 2 - Right		
KIT-CML2G	Clavicle kit - Lateral midshaft part - Size 2 - Left		

	INITIAL C™ KITS CONTENT - IMPLANTS		QUANTITY PER KITS				
	Ref.	Description	KIT-CBM1D/G	KIT-CM2D/G	KIT-CBM2D/G	KIT-CML1D/G	KIT-CML2D/G
PLATES	CBTDM1D or CBTGM1D	Bendable clavicle plate - Midshaft part - Size 1 - Right or left	1	-	-	-	-
	CTDM2D or CTGM2D	Clavicle plate - Midshaft part - Size 2 - Right or left	-	1	-	-	-
	CBTDM2D or CBTGM2D	Bendable clavicle plate - Midshaft part - Size 2 - Right or left	-	-	1	-	-
	CTDML1D or CTGML1D	Clavicle plate - Lateral midshaft part - Size 1 - Right or left	-	-	-	1	-
	CTDML2D or CTGML2D	Clavicle plate - Lateral midshaft part - Size 2 - Right or left	-	-	-	-	1
STANDARD CORTICAL SCREWS Ø3.5 MM	CT3.5L12D	Standard cortical screw - Ø3.5 mm - L 12 mm	1	-	1	1	-
	CT3.5L14D	Standard cortical screw - Ø3.5 mm - L 14 mm	1	2	1	1	2
	CT3.5L16D	Standard cortical screw - Ø3.5 mm - L 16 mm	1	2	1	1	2
	CT3.5L18D	Standard cortical screw - Ø3.5 mm - L 18 mm	1	-	1	1	-
LOCKING SCREWS Ø3.5 MM	SOT3.5L12D	Locking screw - Ø3.5 mm - L 12 mm	1	1	2	1	2
	SOT3.5L14D	Locking screw - Ø3.5 mm - L 14 mm	2	3	4	2	4
	SOT3.5L16D	Locking screw - Ø3.5 mm - L 16 mm	2	3	3	2	3
	SOT3.5L18D	Locking screw - Ø3.5 mm - L 18 mm	1	1	2	1	-

> Initial C™ kits references - Lateral plates

LATERAL PLATES	
Ref.	Description
KIT-CL1D	Clavicle kit - Lateral - Right - Size 1
KIT-CL1G	Clavicle kit - Lateral - Left - Size 1
KIT-CL2D	Clavicle kit - Lateral - Right - Size 2
KIT-CL2G	Clavicle kit - Lateral - Left - Size 2
KIT-CBL2D	Clavicle kit - Bendable - Lateral - Right - Size 2
KIT-CBL2G	Clavicle kit - Bendable - Lateral - Left - Size 2

	INITIAL C™ KITS CONTENT - IMPLANTS		QUANTITY PER KITS		
	Ref.	Description	KIT-CL1D/G	KIT-CL2D/G	KIT-CBL2D/G
PLATES	CTDL1D CTGL1D	Clavicle plate - Lateral part - Size 1 - Right or Left	1	-	-
	CTDL2D CTGL2D	Clavicle plate - Lateral part - Size 2 - Right or Left	-	1	-
	CBTDL2D CBTGL2D	Bendable clavicle plate - Lateral part - Size 2 - Right or Left	-	-	1
LOCKING SCREWS Ø2.8 MM	SDT2.8L10D	Locking screw - Ø2.8 mm - L 10 mm	1	1	1
	SDT2.8L12D	Locking screw - Ø2.8 mm - L 12 mm	2	2	2
	SDT2.8L14D	Locking screw - Ø2.8 mm - L 14 mm	2	2	2
	SDT2.8L16D	Locking screw - Ø2.8 mm - L 16 mm	2	2	2
	SDT2.8L18D	Locking screw - Ø2.8 mm - L 18 mm	1	1	1
STANDARD CORTICAL SCREWS Ø3.5 MM	CT3.5L12D	Standard cortical screw - Ø3.5 mm - L 12 mm	1	1	1
	CT3.5L14D	Standard cortical screw - Ø3.5 mm - L 14 mm	1	1	1
	CT3.5L16D	Standard cortical screw - Ø3.5 mm - L 16 mm	1	1	1
	CT3.5L18D	Standard cortical screw - Ø3.5 mm - L 18 mm	0	1	1
LOCKING SCREWS Ø3.5 MM	SOT3.5L12D	Locking screw - Ø3.5 mm - L 12 mm	1	1	1
	SOT3.5L14D	Locking screw - Ø3.5 mm - L 14 mm	2	2	2
	SOT3.5L16D	Locking screw - Ø3.5 mm - L 16 mm	1	2	2
	SOT3.5L18D	Locking screw - Ø3.5 mm - L 18 mm	1	1	3



NEWCLIP TECHNICS
PA de la Lande Saint Martin - 45 rue des Garotières
44115 Haute Goulaine (France)
Tél. : +33 (0)2 28 21 37 12 - Fax : +33 (0)2 40 63 68 37
Mail : orders@newcliptechnics.com
www.newcliptechnics.com

NEWCLIP USA
642 Larkfield Center
Santa Rosa CA 95403, USA
Phone : + 1 707 230 5078
Mail : customerservice@newclipusa.com
www.newclipusa.com

The information presented in this brochure is intended to demonstrate a Newclip Technics product. Always refer to the package insert, product label and/or user instructions before using any Newclip Technics product. Surgeons must always rely on their own clinical judgment when deciding which products and techniques to use with their patients. Products may not be available in all markets. Product availability is subject to the regulatory or medical practices that govern individual markets. Please contact your Newclip Technics representative if you have questions about the availability of Newclip Technics products in your area.

