

FREEFIX[®]

ulnar shortening system



The freedom to perform a distal or proximal osteotomy
based on clinical need

A system that allows the distal interosseous oblique ligament to dictate the osteotomy position

Shortening options to address specific pathology

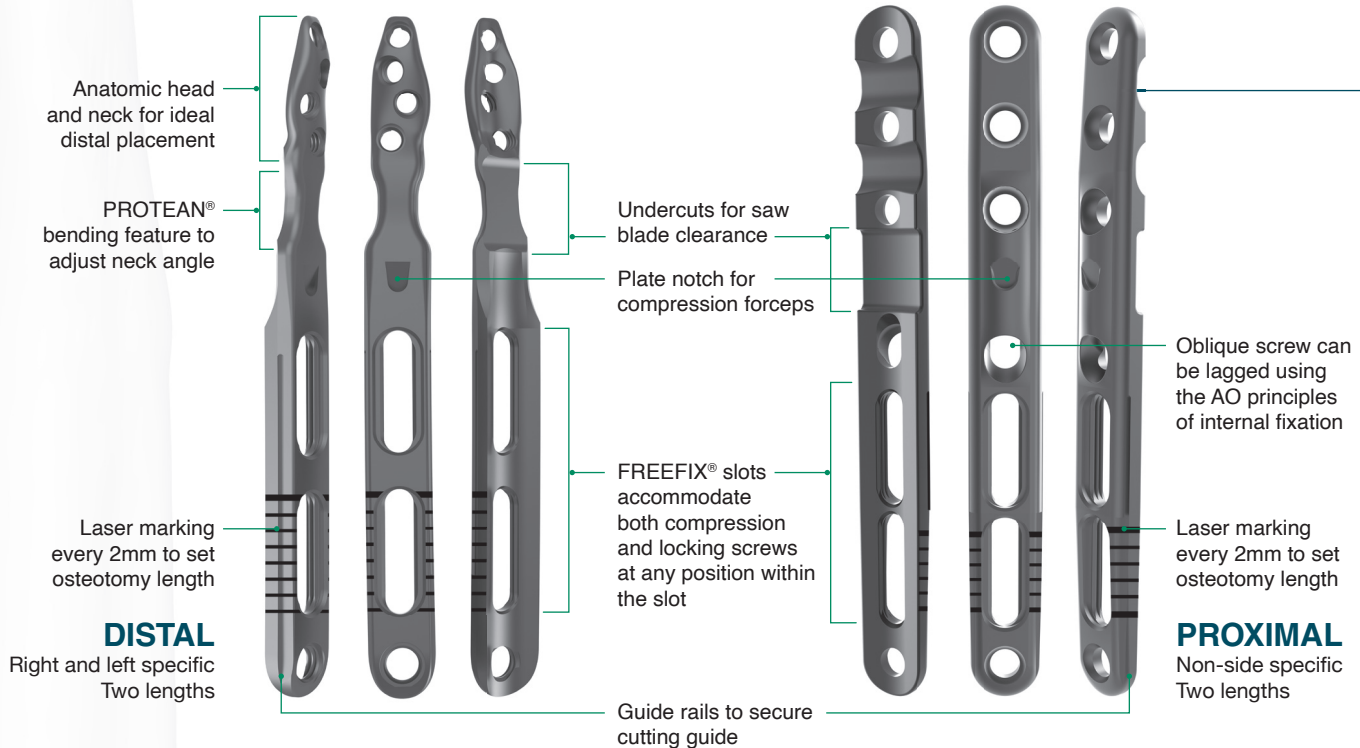
DISTAL OSTEOTOMY

metaphyseal location facilitates healing and maintains normal distal interosseous ligament tension

PROXIMAL OSTEOTOMY

increases tension on distal interosseous ligament to enhance DRUJ stability

Plate features

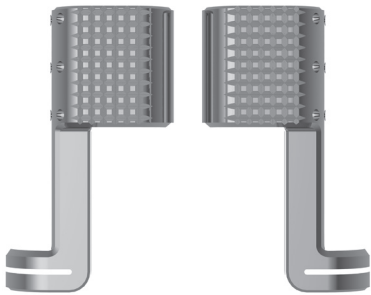


Custom instrumentation for an efficient, reproducible procedure

Distal and proximal cutting guides allow blade access from either side of the plate

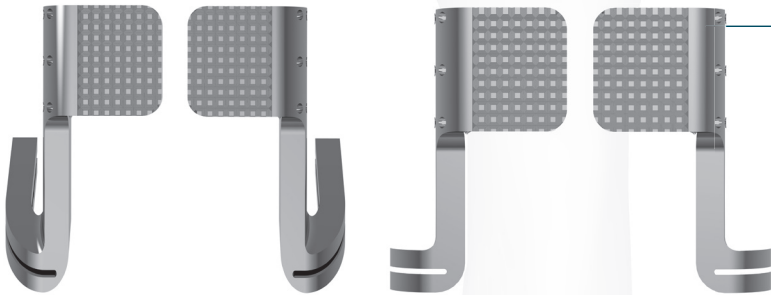
DISTAL PLATE GUIDE

Transverse Cut



PROXIMAL PLATE GUIDES

Oblique or Transverse Cuts

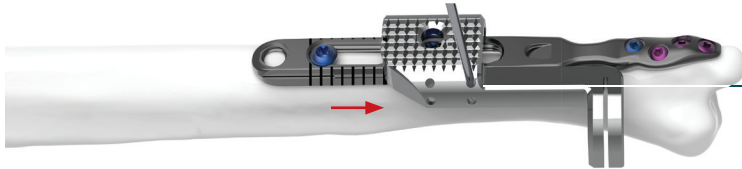


Streamlined procedure that maintains rotational stability



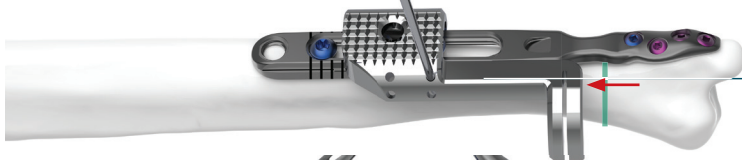
1

Apply the plate to the bone with the proximal screws in the most proximal slot position.



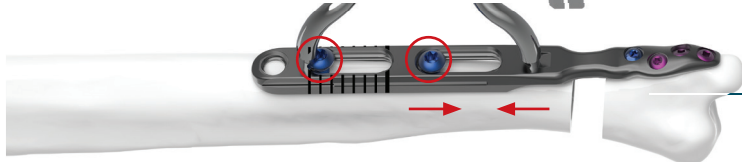
2

Slide the cutting guide to the most distal position and secure with a k-wire(s). Perform the first cut.



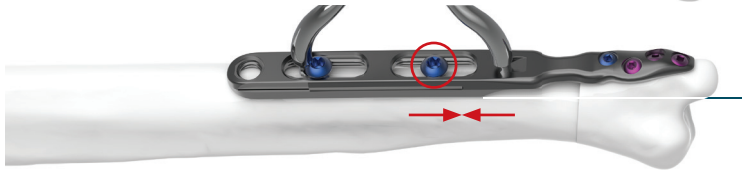
3

Slide the cutting guide proximally to the desired shortening length and resecure with a k-wire(s). Perform the second cut and remove the cutting guide.



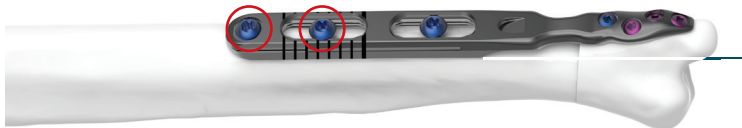
4

Remove the bone wedge, loosen the slot screws and compress the fragments using the compression forceps.



5

Retighten the most distal slot screw while maintaining compression with the forceps.



6

Remove the compression forceps, retighten the proximal slot screw and place the final screw in the most proximal hole.





skeletal dynamics[®]
UNDERSTANDING THE UPPER EXTREMITY

